



# GMT MONTHLY MEMBERSHIP PROGRESS REPORT

Results as of: 7/31/2019

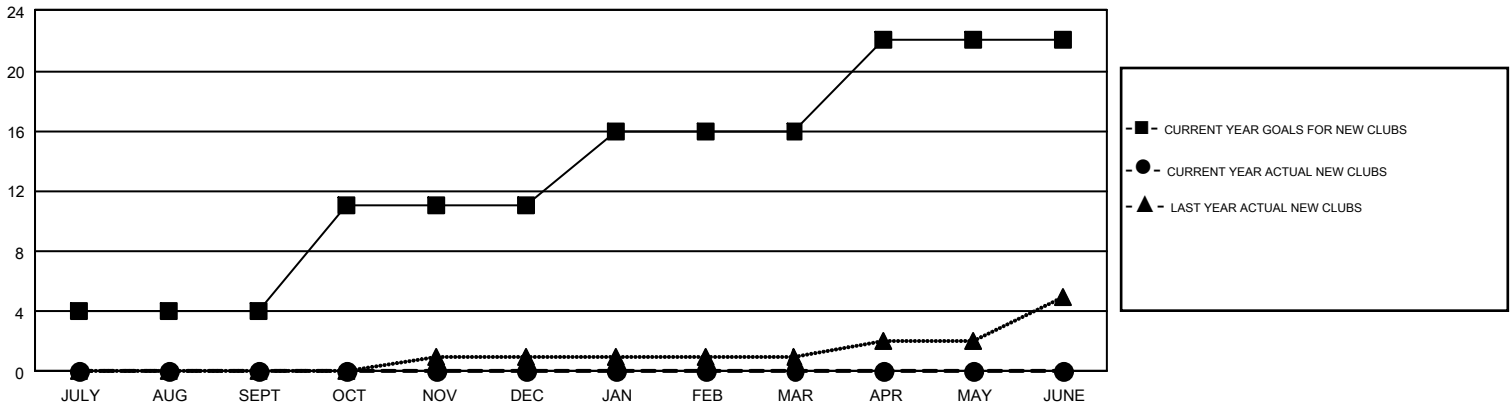
## GMT Constitutional Area 1, Group J

GMT: OPEN

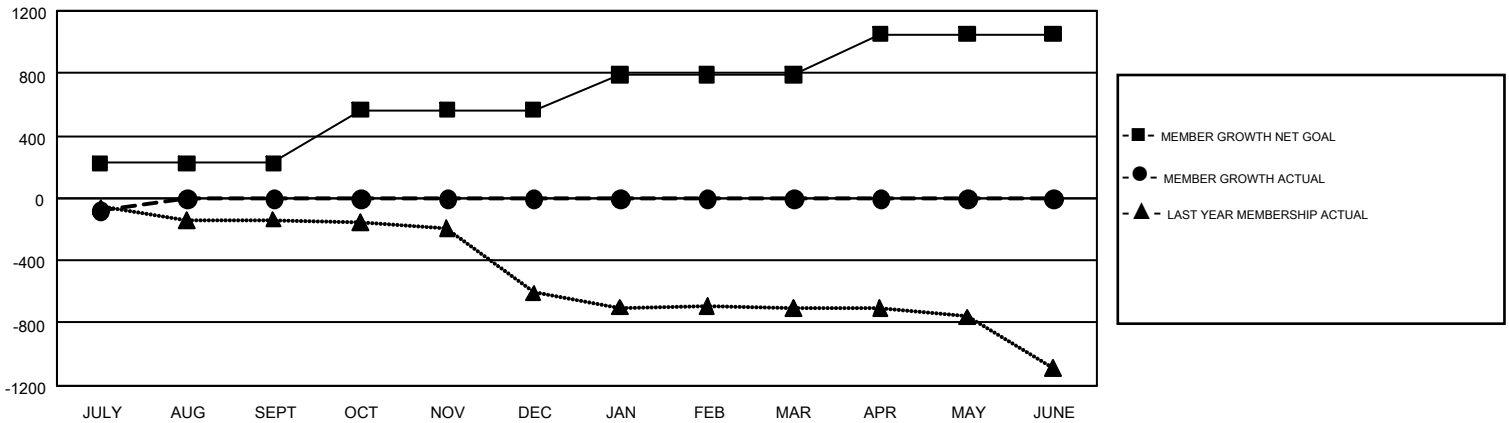
REPORT DOES NOT INCLUDE CLUBS IN UNDISTRICTED AREAS.

Clubs				Members			
RESULTS FOR 2019-2020				RESULTS FOR 2019-2020			
QUARTER	NEW CLUB GOAL	NEW CLUBS	DROPPED CLUBS	QUARTER	MEMBER GROWTH NET GOAL	MEMBER GROWTH ACTUAL	DROPPED MEMBERS ACTUAL (including transfers)
JULY/AUG/SEPT	4	0	1	JULY/AUG/SEPT	223	120	178
OCT/NOV/DEC	7	0	0	OCT/NOV/DEC	343	0	0
JAN/FEB/MAR	5	0	0	JAN/FEB/MAR	225	0	0
APR/MAY/JUNE	6	0	0	APR/MAY/JUNE	260	0	0

GOALS AND ACTUAL NEW CLUBS CUMULATIVE



GOALS AND ACTUAL MEMBERS CUMULATIVE



DROPPED CLUBS: 1	70 CLUBS OF 723 ADDED 1 OR MORE NEW MEMBERS	<u>GENDER DISTRIBUTION</u>	
		MALE	13,265 (72.03%)
		FEMALE	5,152 (27.97%)
<u>DROPPED MEMBERS</u>		TOTAL FAMILY UNIT MEMBERS 3,367	
DECEASED	16	FAMILY MEMBERS PAYING HALF DUES 1,715	
CLUB CANCELLED	0		
OTHER	162		
TOTAL	178		

[CLICK HERE FOR CUMULATIVE MEMBERSHIP DATA](#)